



BIG FRONT GRILL™

Installation Instructions

KENWORTH T800/T880

BFG SKU

BFG-07



Important

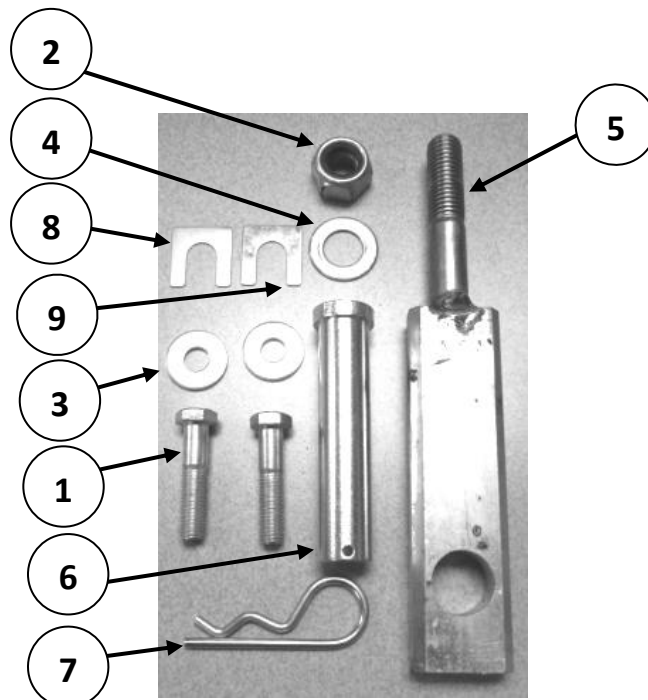
- A BFG Grille Guards are vehicle "Make & Model" specific. Use of a BFG on a vehicle other than on the model it was designed for will constitute improper use of the product and may void warranty.
- B Unless otherwise specified, Class 10.9 or Grade 8 hardware is to be used. For the purposes of these instructions, OE hardware means the truck's original factory hardware.
- C To help maintain the factory finish, avoid acid wash.
- D Ensure bolts of the BFG assembly are fully tightened to the value specified in the installation instruction.
- E At all times exercise safe work shop practices, wear steel toe boots and safety glasses during installation. Parts and components of the BFG assemblies can be heavy, handle with care to avoid injuries. Respect power tools and use them as advertized.

Tools Required

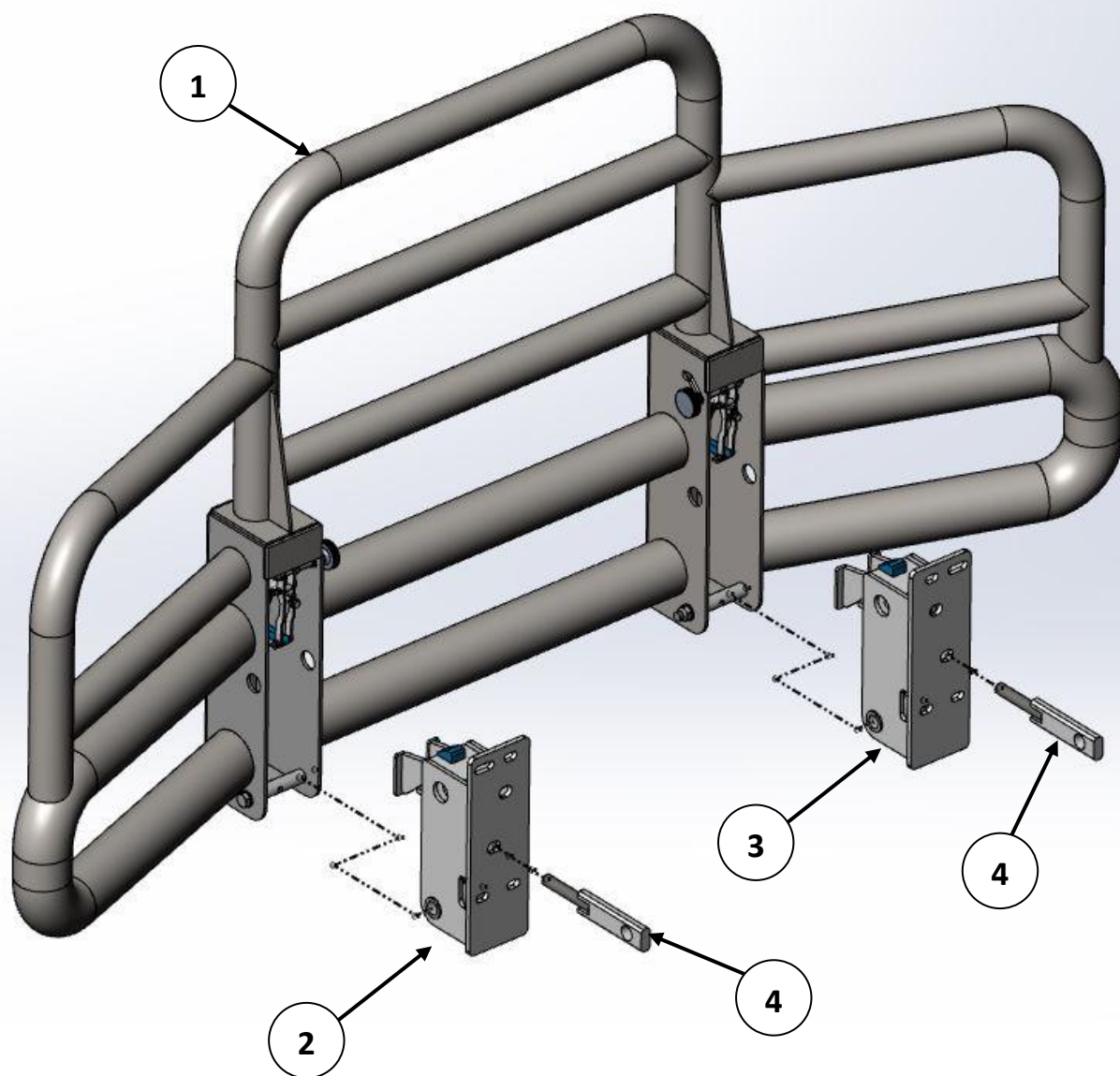
Tool	Spec
Ratchet	Impact gun recommended
Socket	19 mm, 24 mm, 30 mm
Wrench	19 mm, 24 mm, 30 mm

Loose Hardware Included

Item	Description	QTY	Class	Length
1	HEXBOLT, M12X1.75X60	6	10.9	60 mm
2	HEX LOCKNUT, M20X2.5	2	10.9	NA
3	FLATWASHER, M12	6	NA	NA
4	FLATWASHER, M20	2	10.9	NA
5	RECEIVER MOUNTING ADAPTER (PART # BFG-MTK-KW03-SUB)	2	10.9	NA
6	CLEVIS PIN, 25 X 114	2	10.9	NA
7	HAIRPIN, 3/16" DIA	2	NA	NA
8	SHIM, .060"	4	NA	NA
9	SHIM, .036"	4	NA	NA



Parts Referenced in this instruction



Item	Part # / Description	QTY
1	BFG-GR01 / GRILL	1
2	BFG-HN-01-DS/ BFG HINGE BRACKET DRIVER SIDE	1
3	BFG-HN-01-PS/ BFG HINGE BRACKET PASSENGER SIDE	1
4	MTK-07-01 / BFG SUBMOUNT (TOW RECEIVER ADAPTER)	2

Installation Instructions

1. Unlock the slam latch on the driver's side upright by pulling the release knob up & toward the front of the grill (Figure 1). Use a 24mm socket and wrench to remove the driver side hinge bolt & locknut located at the bottom of the grill assembly (Figure 2). Remove the hinge bracket from the assembly.



Figure 1

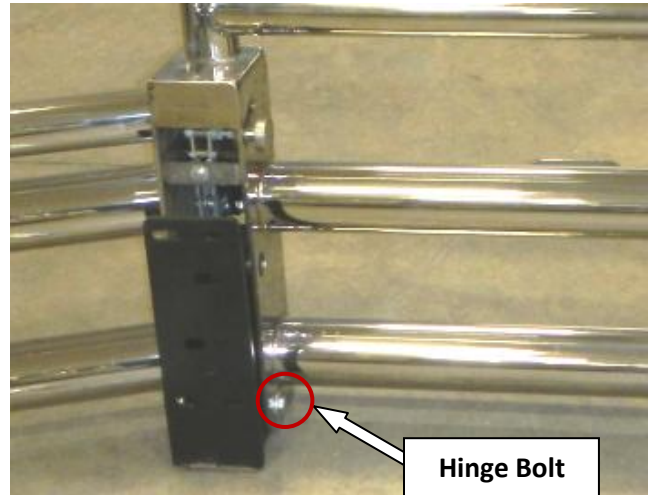


Figure 2

2. Use a 19mm socket and wrench to remove the 3 factory bumper bolts on the driver's side of the truck (Figure 3).



Figure 3

3. Insert one BFG submount into the driver's side receiver (Figure 4). Use the factory tow pins to lock the adapter into place (Figure 5).

NOTE: MAKE SURE TO TWIST-LOCK THE TOW PINS.



Figure 4

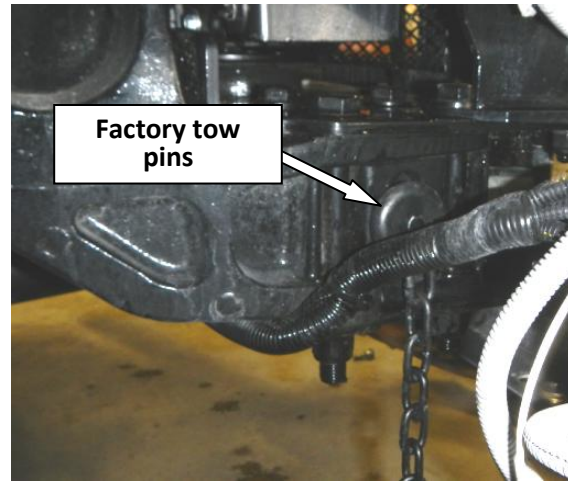


Figure 5

4. Slide the hinge mount over the BFG submount and loosely install the M20 washer and M20X2.5 lock nut (Figure 6). Loosely install the upper M12 factory bolt and washer. Loosely install supplied M12x1.75x60 bolts and M12 washers. DO NOT TIGHTEN BOLTS.

NOTE: If there was a washer in-between the bumper and the frame, make sure to put it back in when installing bumper bolts.

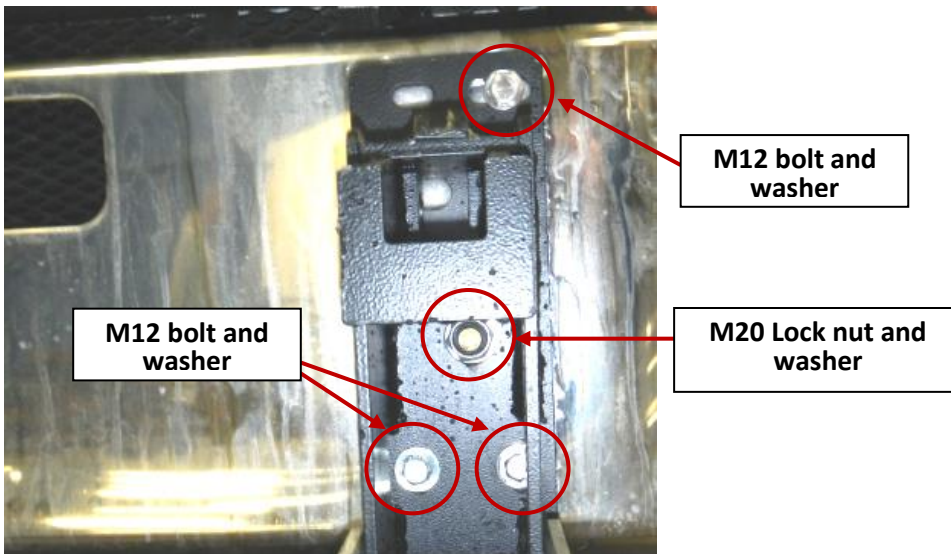


Figure 6

5. If required, reinstall the factory bolts attaching factory bumper sub mounts to the frame. Bolts are to be installed with nut located on the top. This is done in order to clear M12x1.75x60 bolts included in the BFG hardware kit (Figure 7).

Note: Reinstall factory bolts one at a time to make sure factory sub mounts stay aligned to each other.

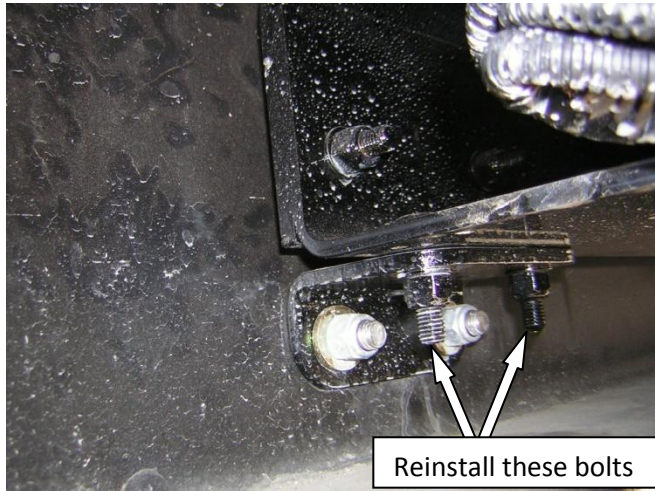


Figure 7

6. Repeat steps 1-5 for the passenger side.
7. Lift the grill into place (as shown in Figure 8) and install the 2 hinge bolts & locknuts using a 24 mm socket and wrench. Torque to 200 lb-ft. Place the release knobs in the locked or closed position. Use a 19mm socket and wrench to snug the 6 hinge bracket bolts. DO NOT TIGHTEN, ONLY SNUG.

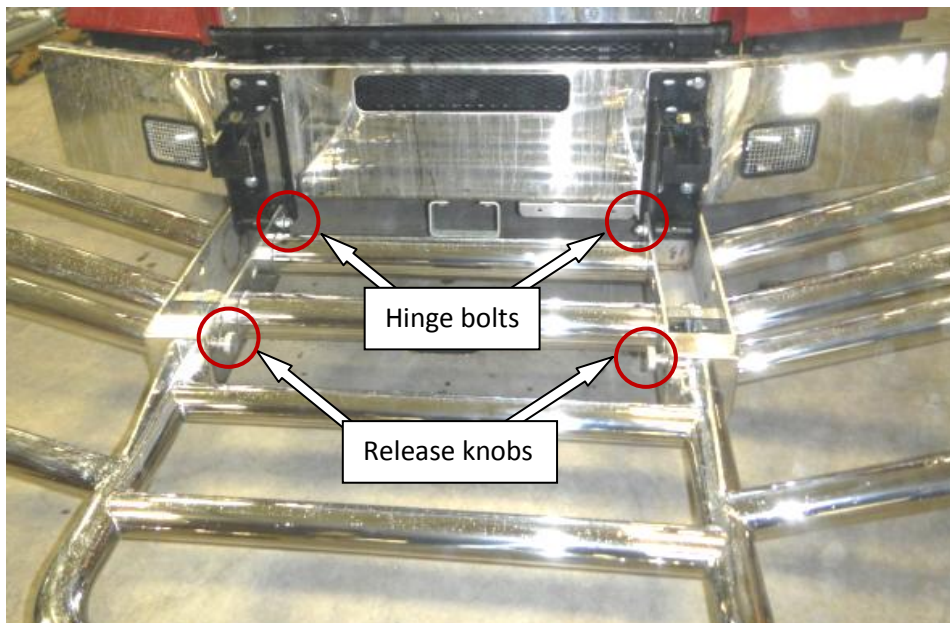


Figure8

8. Lift the grill up, and close it in the upright and locked position. Latch mechanism has been adjusted from the factory and is ready for use. Check straightness and fitment of the grill. If shimming is required, unlock the release knobs, lower the grill, loosen the bolts, install the included shims as required, snug mounting bolts again, and re-check fitment.

Optional:

If the factory center tow pin mount is very close to the bottom tube of the BFG when the grill is closed, remove factory tow pin spacer plate located in between the factory tow pin mount and the truck's frame. To remove factory tow pin spacer plate undo 4 tow pin mount bolts as seen in Figure 10. Reinstall tow pin mount.



Figure 9

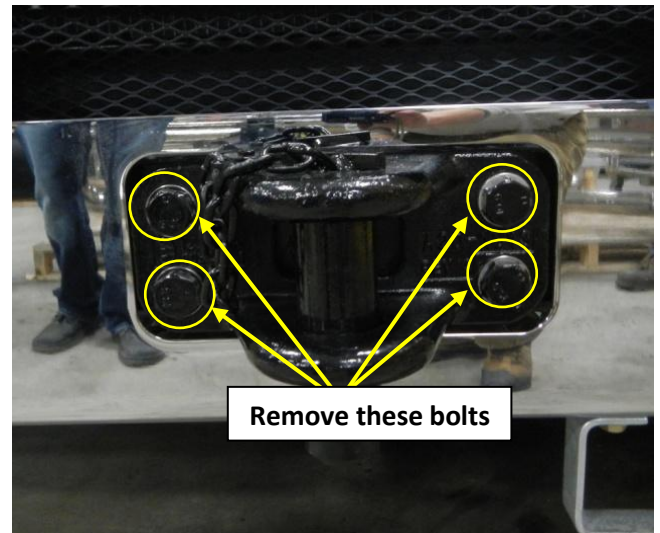


Figure 10

9. Once fitment is complete, lower the grill and torque the 6 M12 hinge mounting bolts to 100 lb-ft. Torque M20x1.5 locknuts on the receiver mounting adapter to 300 lb-ft. Place the release knobs in the locked position and close the grill (Figure 11 and 12).



Figure 21 – BFG installed on Kenworth T800



Figure 11 – BFG installed on Kenworth T880