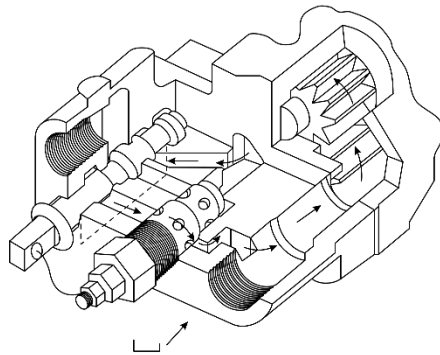
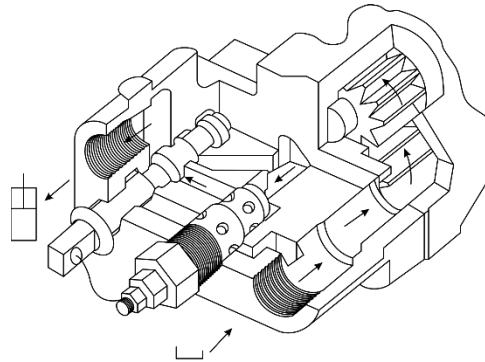


### 2-Line installation

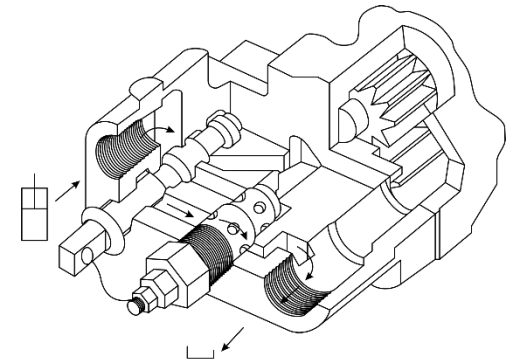
One line to cylinder, one line to the reservoir, for intermittent operation only.



**Spool in Neutral Position:**  
Oil recirculates internally.



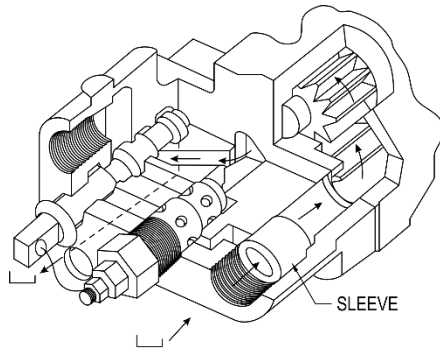
**Spool in Raise Position:**  
Oil is routed through work port to raised the cylinder.



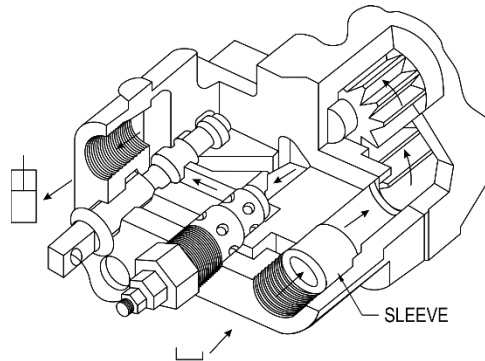
**Spool in Lower Position:**  
Oil flows from the cylinder through the relief valve to return to tank.

### 3-Line installation

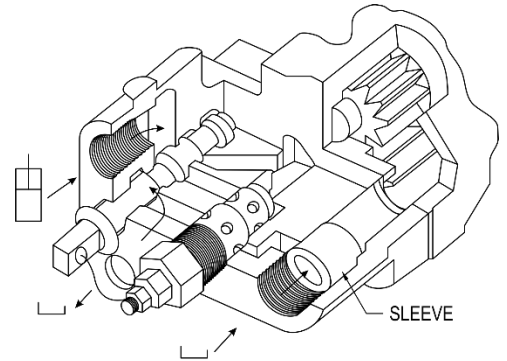
One line to cylinder, two lines to the reservoir. For continuous or intermittent operation.



**Spool in Neutral Position:**  
Oil circulates through the pump and returns to tank.



**Spool in Raise Position:**  
Oil routed through work port to raise the cylinder.



**Spool in Lower Position:**  
Oil flows from the cylinder through the bottom port and returns to tank.

Note: Three-line installation is always recommended whenever possible. Simply install the sleeve supplied in the inlet port and connect the optional return line to tank. This will maintain a lower operating temperature. We also recommend the use of a return line filter.

**Two-line systems are for intermittent operation only.**

A schematic diagram of a hydraulic system. At the top center is a rectangular tank. A line connects the bottom of the tank to a 6-port manifold on the left. The manifold has three ports on its right side: the top one is labeled 'Inlet Port' with an arrow pointing into it; the middle one is labeled 'Return Port (Plugged)' with an arrow pointing into it; and the bottom one is connected to a vertical cylinder on the right. The cylinder has a rod extending upwards. A line also connects the left side of the manifold to the cylinder. The top-left port of the manifold is labeled 'Cylinder Port' with an arrow pointing into it. The bottom-left port of the manifold is connected to the bottom of the cylinder. The top-right port of the manifold is also connected to the bottom of the cylinder.

This diagram illustrates the correct configuration for the oiling system when using a 3-line sleeve. The setup includes a 3-line sleeve with three ports: a 'Cylinder Port' on the left, an 'Inlet Port' on the right, and a 'Return Port (Un-Plugged)' in the middle. A 'Diffuser' is connected to the top of the sleeve. A 'Filter' is installed in the line between the sleeve and the cylinder. A note at the bottom states: 'This line must be below the oil level at all times'.