



Link Mfg. Ltd.
223 15th St. N.E.
Sioux Center, IA USA
51250-2120
www.linkmfg.com

**QUESTIONS?
CALL CUSTOMER
SERVICE
1-800-222-6283**

INSTALLATION INSTRUCTIONS

800A0210 - Ride Shock Kit



80003586
AUG 2, 2019

IMPORTANT: IT IS IMPORTANT THAT THE ENTIRE INSTALLATION INSTRUCTIONS BE READ THOROUGHLY BEFORE PROCEEDING WITH SUSPENSION INSTALLATION.







1. INTRODUCTION

Thank you for choosing a Link Auxiliary Suspension. We want to help you get the best results from this suspension and to operate it safely. This instruction sheet contains information to guide you through the installation of the Link Auxiliary Suspension Ride Shock Kit. This manual is intended solely for use with this product.

All information in this manual is based on the latest information available at the time of printing. Link Manufacturing reserves the right to change its products or manuals at any time without notice.

Damaged components should be returned to Link with a pre-arranged Returned Materials Authorization (RMA) number through the Customer Service Department. The damaged component may then be replaced if in compliance with warranty conditions.

2. SAFETY SYMBOLS, TORQUE SYMBOL, and NOTES

	DANGER indicates a hazardous situation which if not avoided, will result in death or serious injury.
	WARNING indicates a potentially hazardous situation which, if not avoided, could result in death or serious injury.
	CAUTION indicates a potentially hazardous situation which, if not avoided, could result in minor or moderate injury.
	NOTICE indicates a potentially hazardous situation which, if not avoided, may result in property damage.
	TORQUE indicates named fasteners are to be tightened to a specified torque value.
	NOTE: A Note provides information or suggestions that help you correctly perform a task.

3. SAFE WORKING PRACTICES:

3.1

When handling parts, wear appropriate gloves, eyeglasses, ear protection, and other safety equipment.

3.2

Practice safe lifting procedures. Consider size, shape, and weight of assemblies. Obtain help or the assistance of a crane when lifting heavy assemblies. Make certain the path of travel is clear.

4. INSTALLATION

4.1 No alterations of any Link suspension component is permitted without proper authorization from qualified Link personnel.

4.2 No welding of any suspension components is permitted except when specified by Link.

4.3 The vehicle manufacturer should be consulted before any modifications are made to the frame of the vehicle. Cutting or altering the frame in certain areas may affect the manufacturer's warranty.

4.4 Proper tightening of fasteners is important to the performance and safety of the suspension. Follow all torque specifications throughout the instructions.

4.5 Install Upper Shock Tab Assembly as shown with M8 X 1.25 fasteners provided.

 **TORQUE** M8 X 1.25 Fasteners to 20-30 FT-LBS (2X)

4.6 Install the Lower Inner and Outer Shock Brackets as shown with M8 X 1.25 fasteners provided. Do not tighten until after shock absorber has been installed.

NOTE: Lower Shock Brackets "B" & "C" are used on passenger's side of the suspension.

4.7 Install Shock Absorber to Upper Shock Tab Assembly with M16 X 2.0 X 110 Hex Cap Screws and Flange Lock Nuts as shown.

4.8 Install Shock Absorber to Lower Shock Bracket plates with M16 X 2.0 X 90 Hex Cap Screws and Flange Lock Nuts as shown.

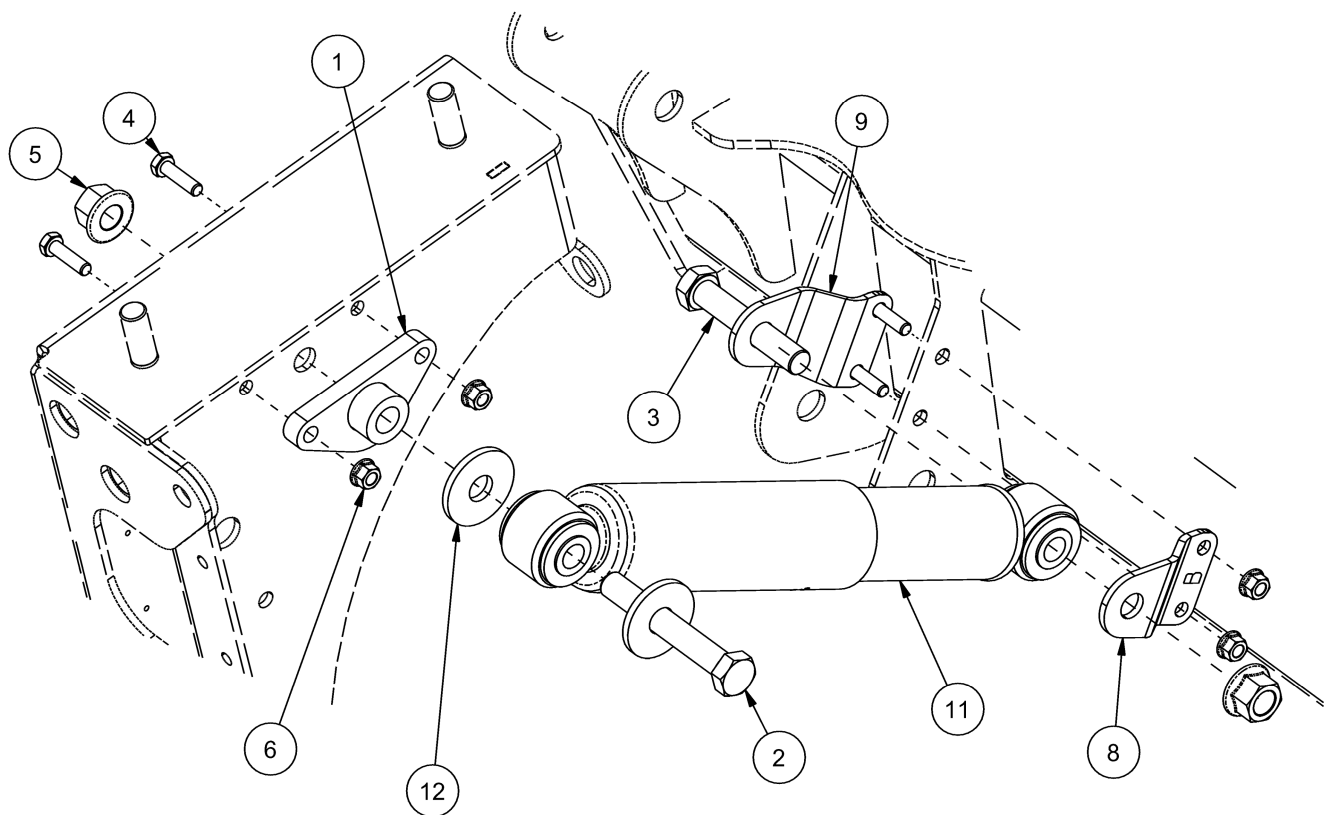
4.9 Tighten Shock Absorber fasteners before lower mount fasteners as specified below.

 **TORQUE** M16 X 2.0 Fasteners to 160-200 FT-LBS (2X)

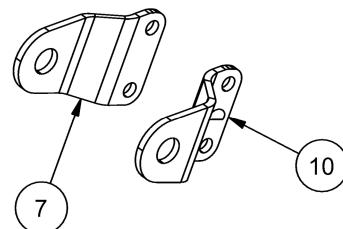
 **TORQUE** M8 X 1.25 Fasteners to 20-30 FT-LBS (2X)

4.10 Repeat steps 4.5 through 4.9 for driver's side of the suspension.

NOTE: Lower Shock Brackets "A" & "D" are used on driver's side of the suspension.



KIT-ACCESSORY-RIDE SHOCK - 800A0210		
ITEM	DESCRIPTION	QTY
1	ASSEMBLY-SHOCK TAB, UPPER	2
2	HEX CAP SCREW, M16 X 2.0 X 110, 10.9	2
3	HEX CAP SCREW, M16 X 2.0 X 90, 10.9	2
4	HEX CAP SCREW, M8 X 1.25 X 30, 8.8	8
5	HEX TOP LOCK FLANGE NUT, M16 X 2.0, CLASS 10	4
6	HEX TOP LOCK FLANGE NUT, M8 X 1.25, CLASS 10	8
7	INNER BRACKET-SHOCK, LOWER - A	1
8	INNER BRACKET-SHOCK, LOWER - B	1
9	OUTER BRACKET-SHOCK, LOWER - C	1
10	OUTER BRACKET-SHOCK, LOWER - D	1
11	SHOCK ABSORBER	2
12	WASHER-OVERSIZED, 16MM	4





LINK MANUFACTURING, LTD.
223 15TH ST. NE
SIOUX CENTER, IA 51250
1-800-222-6283
www.linkmfg.com