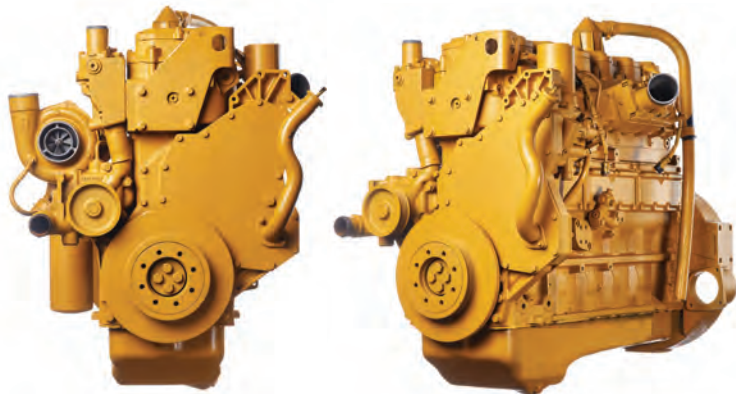


Caterpillar® 3126 and C7 Diesel Engines



LONG BLOCK INCLUDES:

- Block
- Rods
- Piston assemblies
- Cylinder head
- Gear housing & front seal
- Oil cooler
- Crankshaft
- Valve train
- Camshaft
- Gasket set
- Oil pump

LONG BLOCK SUPREME INCLUDES:

ALL PARTS ON THE LONG BLOCK PLUS

- Front cover
- Oil pan
- Flywheel housing

***INJECTORS CAN BE ADDED FOR
ADDITIONAL COST UPON REQUEST**

COMPLETE DROP-IN ENGINE INCLUDES:

ALL PARTS ON THE LONG BLOCK SUPREME PLUS

- Intake manifold
- Damper
- Injection pump & lines
- Exhaust manifolds
- Injectors
- Valve cover
- Water pump & pulley
- Turbocharger
- High pressure pump

ELECTRONIC COMPLETE ENGINES WILL ALSO INCLUDE:

- Injection pressure sensor
- Boost pressure sensor
- Oil pressure sensor
- Engine timing & speed sensor
- Coolant temperature sensor
- Air temperature sensor
- Atmospheric sensor

APPLICATIONS/ENGINE IDENTIFICATION

Reviva's Caterpillar diesel engines are available for many class 6-8 truck, bus, vocational, and industrial applications. Reviva's long block and drop-in engines are available for years 1996 and up for the 3126 and C7 families. To determine correct part number and configurations available, please gather the following information from the engine data tag on the valve cover:

- Engine Serial Number (Format 7AS OR WAX....)
- Engine Arrangement Number (Format 108-5291)
- Engine Model Year
- Vehicle: Year, Make, Model

ABOUT THE REVIVA 3126/C7

- All Reviva engines are assembled in the USA.
- Reviva replaces 100% of pistons, rings, bearings, bushings, gaskets and seals.
- Reviva matched OEM requirements for piston type depending upon HP and application.
- All heads get new valves and are vacuum tested to ensure the quality of the valve job. All heads are pressure tested and upgraded to the latest style valve seal.
- Cylinder head seats replaced 100% new.
- Reviva grinds 100% of camshafts' lobes.
- All connecting rods are de-magnetized.
- Core plugs are 100% stainless steel to avoid corrosion.
- Blocks, heads and crankshafts are 100% magnaflux tested to avoid cracked components.
- Connecting rods have new bushings installed and both large and small end are re-machined to OEM specifications.
- Crankshaft is checked for size, reground, if necessary, and micro-polished to OEM specifications.

WARRANTY COVERAGE

On-Road Complete Drop-In configurations: 2yr/unlimited mileage.*

Long Block configurations: 1 year/unlimited mileage.

Off-Road Complete Drop-In configurations: 1yr/2,000 hours.

*Some restrictions apply; see limited warranty details or call for more information.
2nd year long block coverage only.

©2017 Reviva. All Rights Reserved.
Reviva is an independent manufacturer and is not affiliated with Navistar, Ford, Cummins, General Motors, or Caterpillar.

ISSUE: 3126-E



Caterpillar 3126 / C7 Engine Core Evaluation

SECTION I: CUSTOMER INFORMATION

User/Installer _____ Date _____

Dealer/Distributor Contact _____ Phone #() _____

Engine Part Number _____ Serial Number _____

SECTION II: NON TYPE FOR TYPE OR JUNKYARD CORE DEDUCTION

If returning a core of a type different than the engine being purchased (ie: different displacement or horsepower rating), junkyard or disassembled core that cannot be remanufactured, the deduction will be up to a full core deposit.

\$

SECTION III: CORE DEDUCTIONS

The following table represents the deductions for missing or damaged components. Missing miscellaneous fittings will be charged at cost. Oil and coolant must be drained (including oil cooler), and oil filter must be removed and discarded. Fuel Filters must not be removed.

- | | |
|--|---|
| 1) <input type="checkbox"/> Block \$1,000 | 10) <input type="checkbox"/> Exhaust Manifold \$100 |
| 2) <input type="checkbox"/> Cylinder Head \$400 | 11) <input type="checkbox"/> Turbocharger \$500 |
| 3) <input type="checkbox"/> Oil Pan \$150 | 12) <input type="checkbox"/> High Pressure Oil Pump \$500 |
| 4) <input type="checkbox"/> Vibration Damper \$100 | 13) <input type="checkbox"/> Fuel Filter Base \$100 |
| 5) <input type="checkbox"/> Gear Housing \$250 | 14) <input type="checkbox"/> Fuel Injectors (ea) \$100 |
| 6) <input type="checkbox"/> Gear Cover \$200 | 15) <input type="checkbox"/> Fuel Lines High PSI (ea) \$15 |
| 7) <input type="checkbox"/> Valve Cover \$200 | 16) <input type="checkbox"/> Coolant/Oil Filter/Oil not removed \$500 |
| 8) <input type="checkbox"/> Oil Cooler \$125 | 17) <input type="checkbox"/> Oil Pump \$100 |
| 9) <input type="checkbox"/> Flywheel Housing \$200 | 18) <input type="checkbox"/> Original Engine Skid \$600 |

**TOTAL EXTERNAL
DEDUCTIONS**
(add lines 1 through 18)

\$

SECTION IV: NET CORE CREDIT

CORE DEPOSIT
(Complete and
Assembled)

—

DEDUCTIONS
(Sum of Section
II, III and IV)

=

NET
CORE
CREDIT

SECTION V: AUTHORIZATION

Dealer/Distributor Signature _____ Date _____

Inspector Signature _____ Date _____

Inspector Phone #() _____