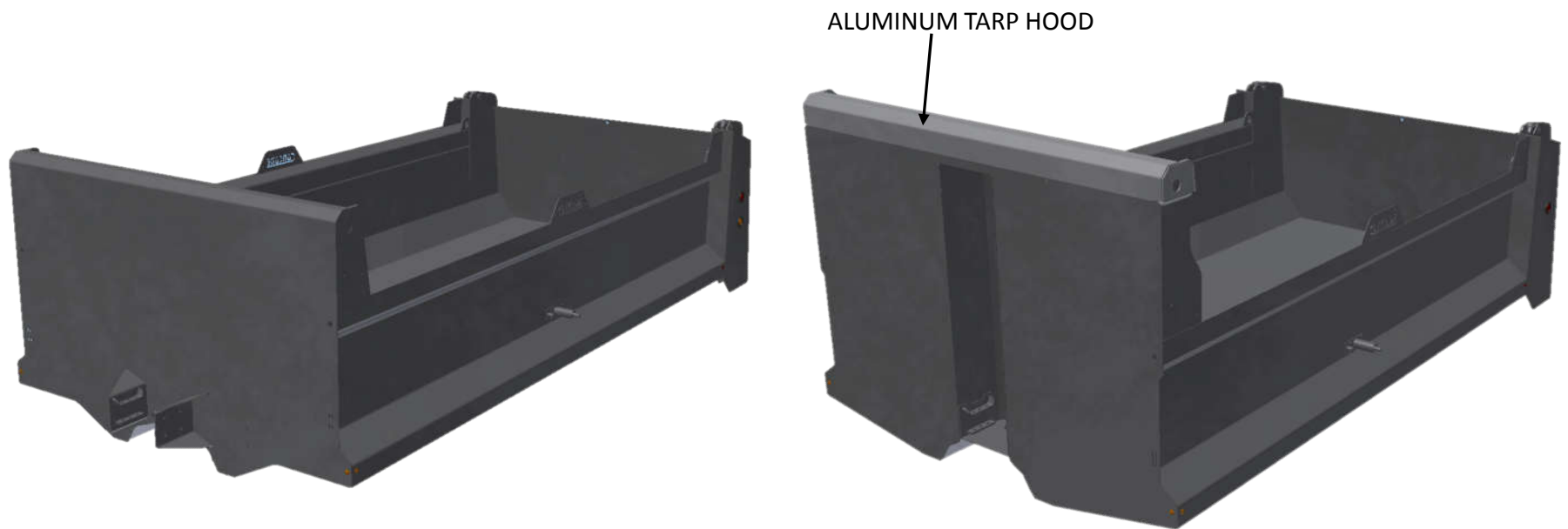


# ***Single Wall Gravel Box***



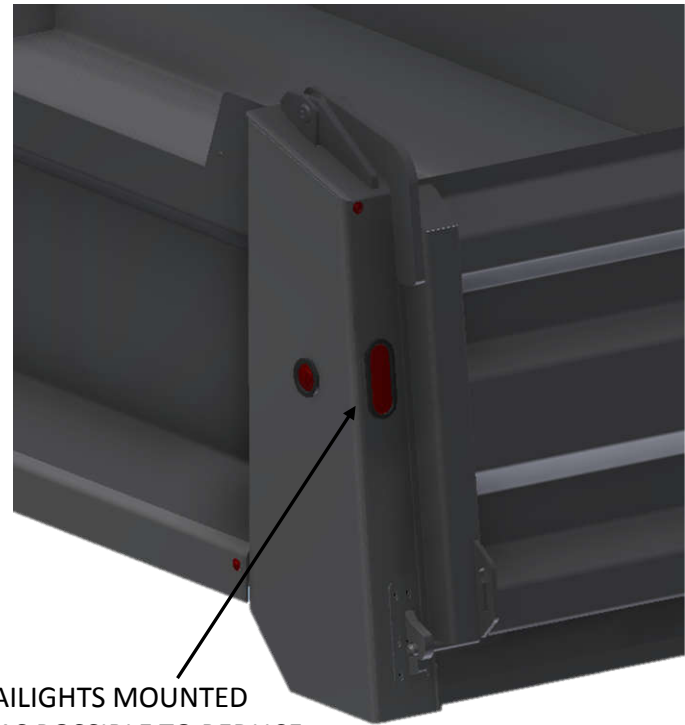
# Flat Front or Doghouse Front



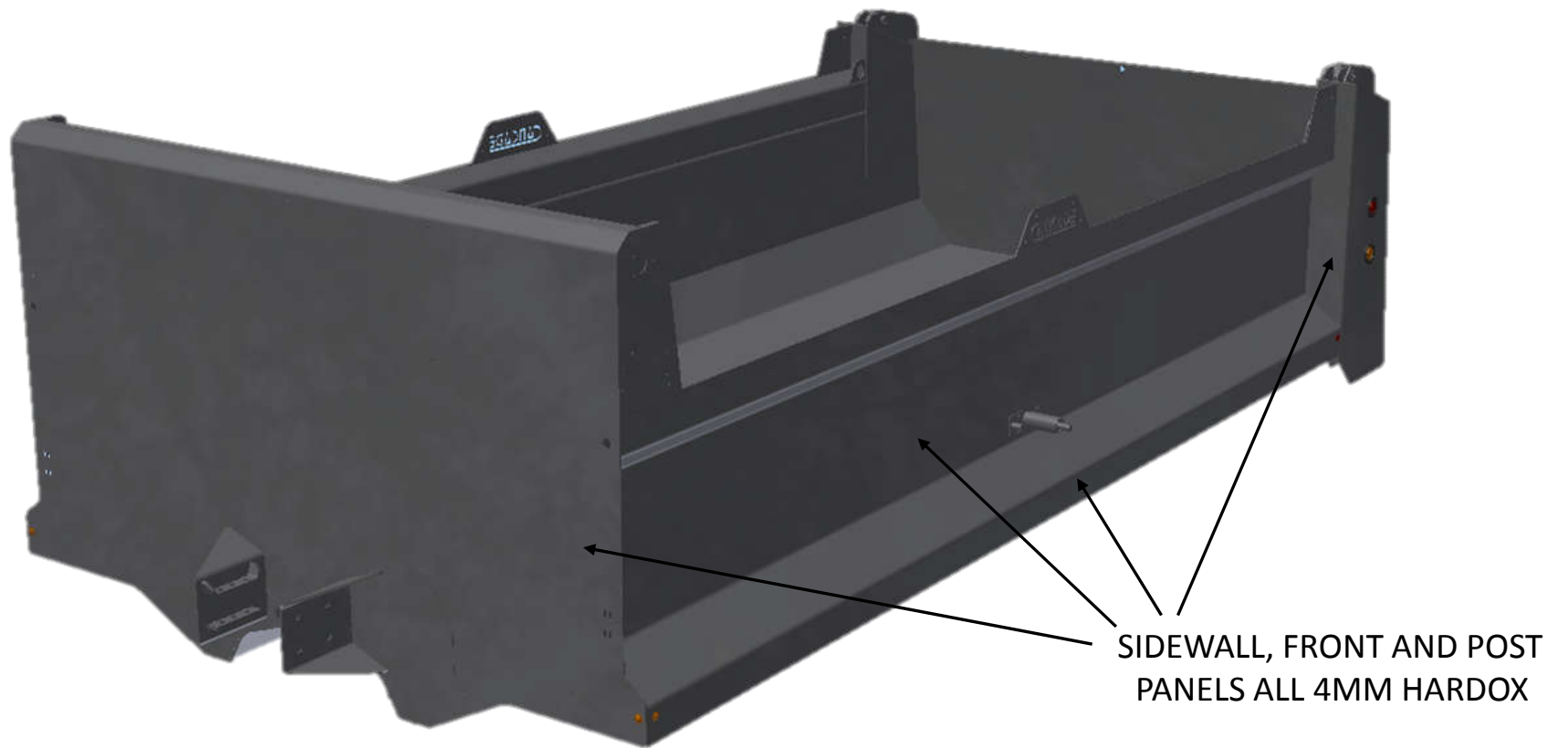
# Light Options for Pup Body or Truck Body

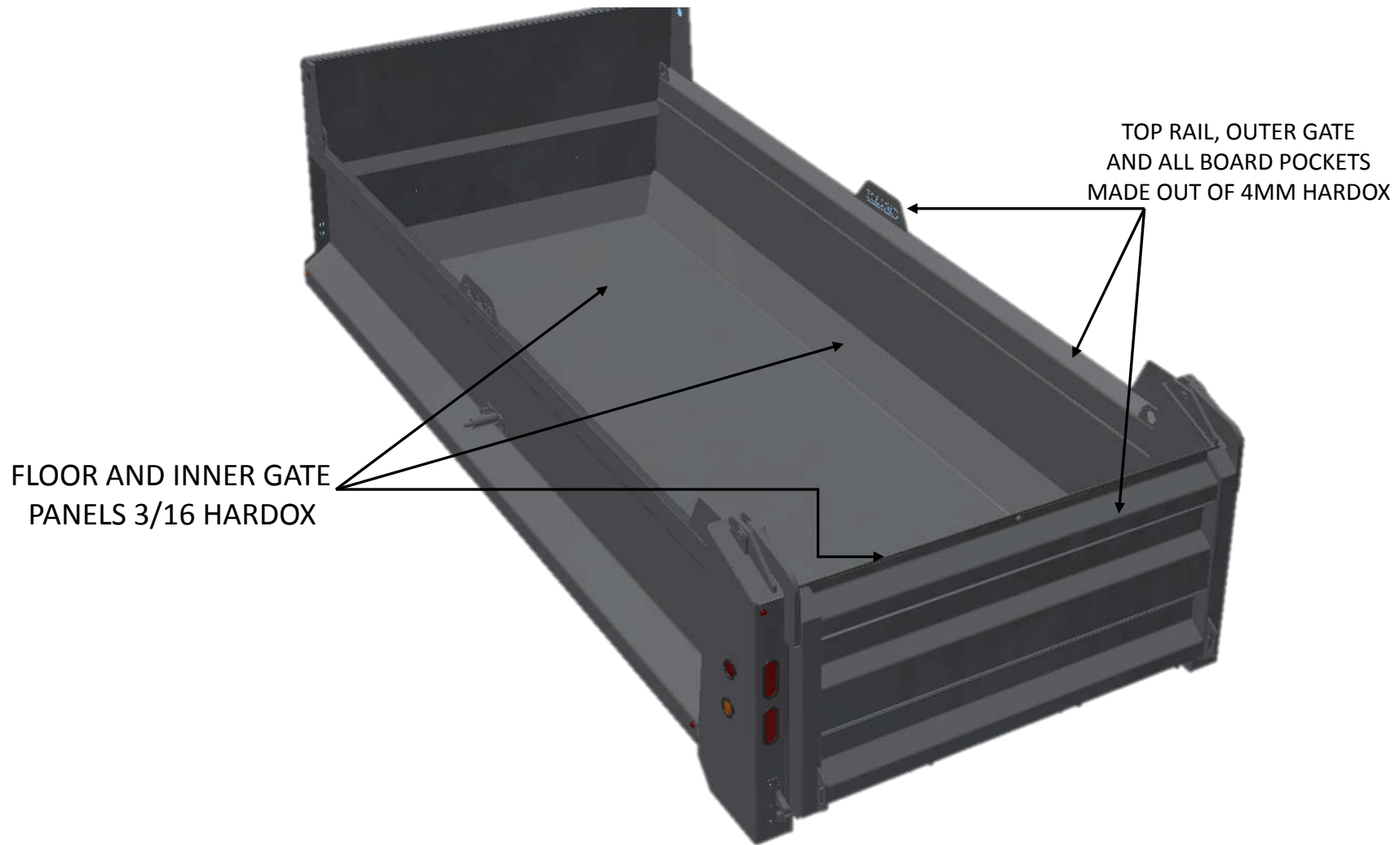


**SLOPED OR STRAIGHT GATE AVAILABLE**

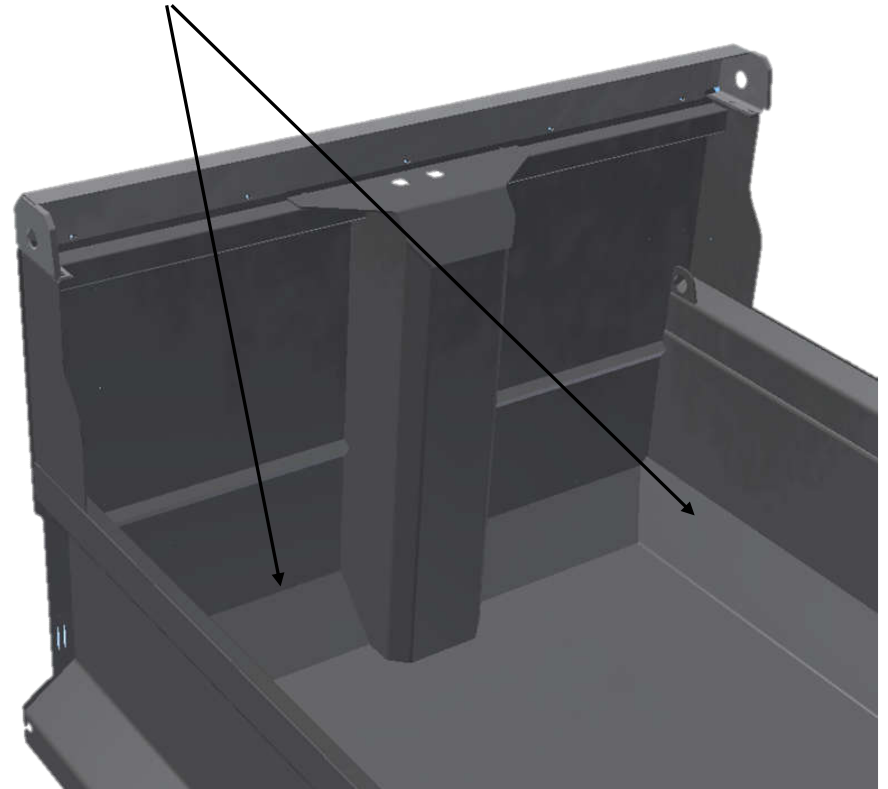
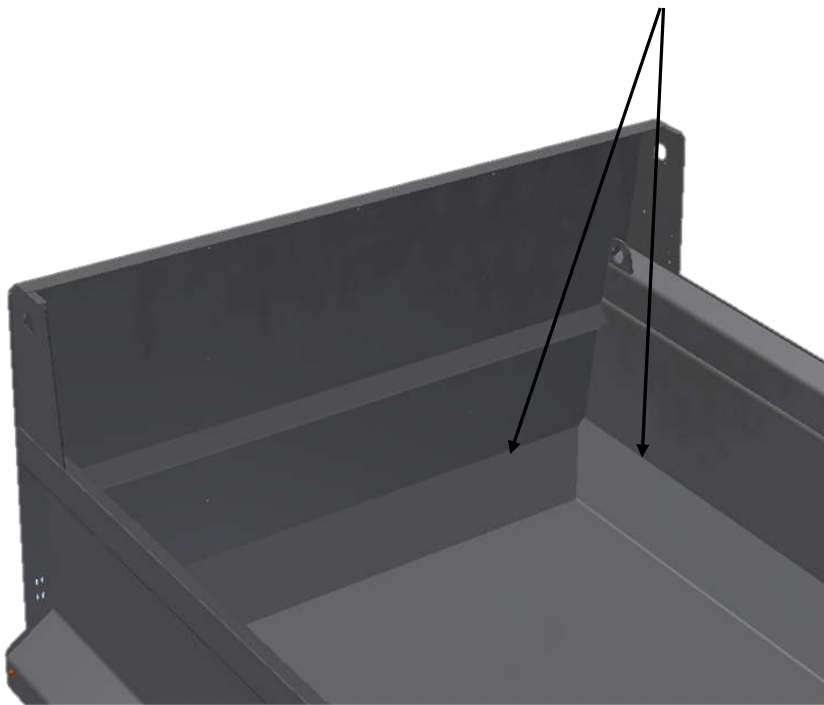


TAILLIGHTS MOUNTED  
HIGH AS POSSIBLE TO REDUCE  
MELTING FROM ASPHALT

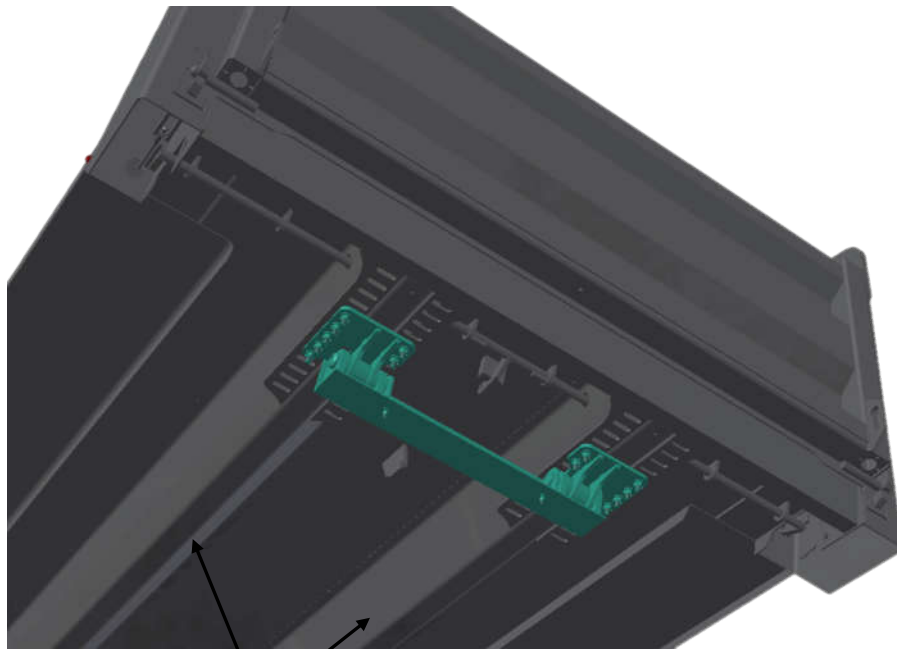




# **Sloped Corners To Improve Product Clean Out**



# Heavy Duty Rear Hinge, Adjustable Overhang



QT100 FLOOR SILLS



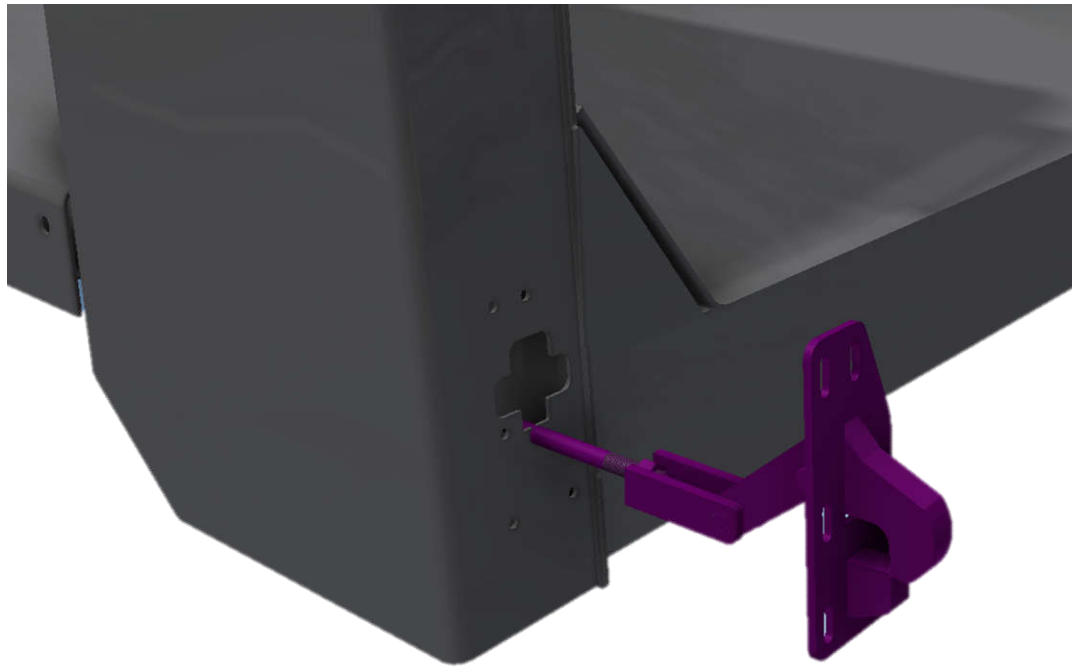
2" DIAMETER GREASEABLE  
HINGE PIN

# Bolt On Steel Mudflap Brackets





# **Bolt In Gate Locks For Ease of Repair**



# Hydraulic Gate Option Available



Cancade CBI LTD

# **Welded On Steel Steps or Bolt On Aluminum Ladder Options**

